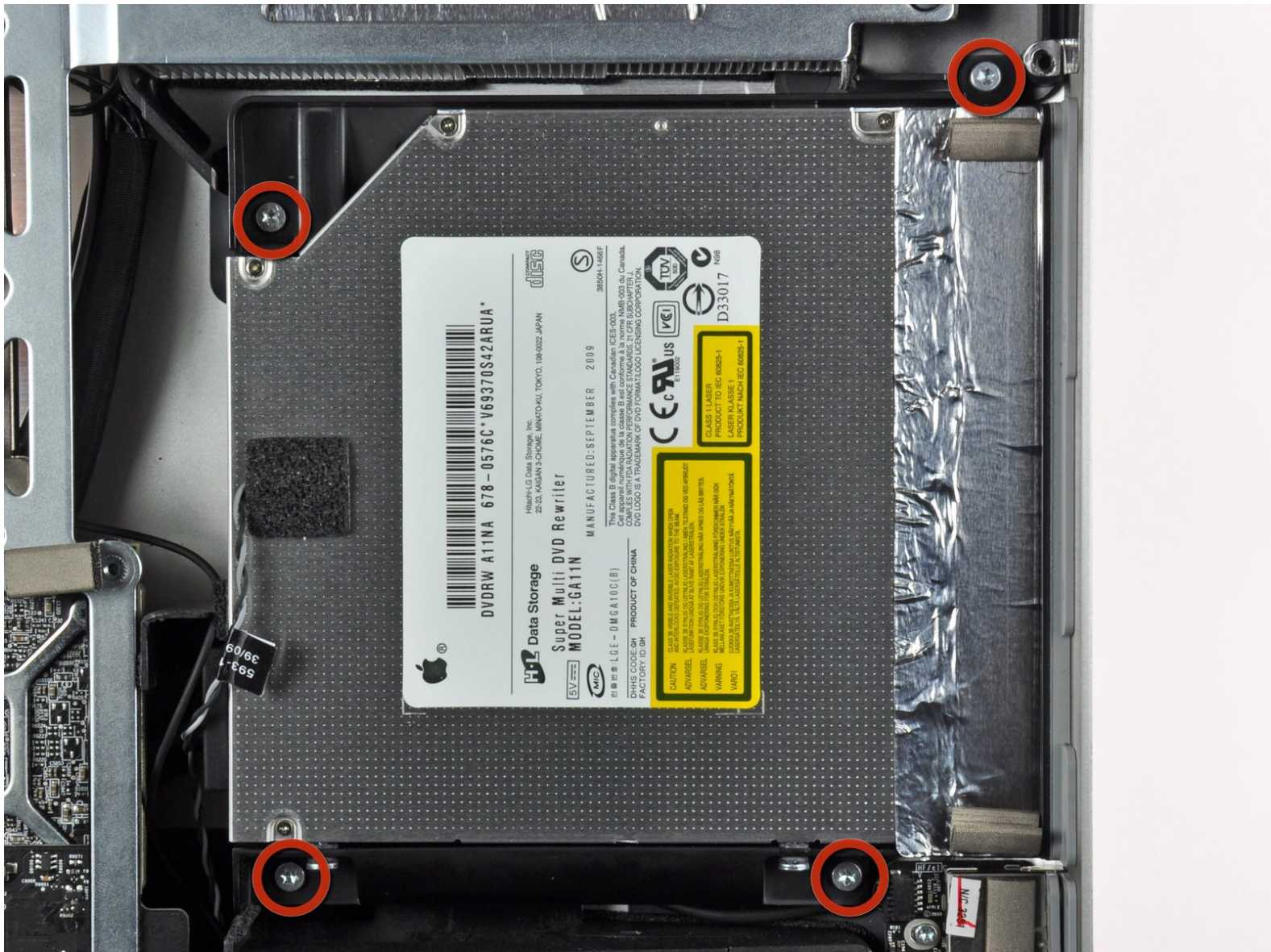




# iMac Intel 27" EMC 2309 and 2374 Optical Drive Replacement

Written By: Walter Galan



---

# INTRODUCTION

This guide is an internal private guide used as a prereq.

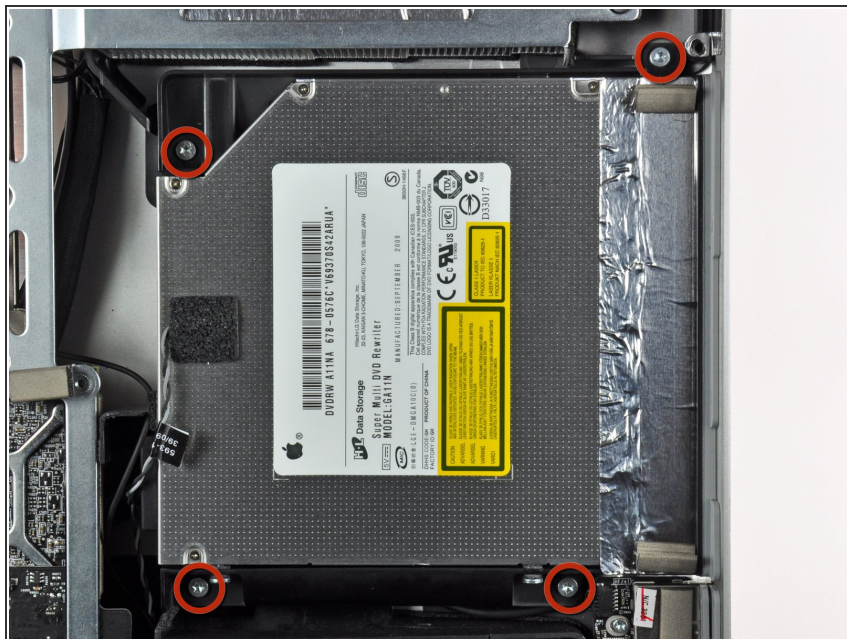


## TOOLS:

- [T10 Torx Screwdriver](#) (1)
-



## Step 1 — Optical Drive



- Remove the four T10 Torx screws securing the optical drive to the outer case.

## Step 2



- Pull the optical drive thermal sensor connector straight away from its socket on the logic board.



## Step 3



- Insert a spudger between the optical drive connector and the optical drive.
- Twist the spudger to slightly separate the optical drive connector from the optical drive, then use your fingers to pull the connector away from the drive.

## Step 4



- Lift the left edge of the optical drive slightly and pull it away from the right side of the outer case.
- During reassembly, note that there are two holes in the optical drive face plate into which two stubby plastic posts must engage for proper positioning.

To reassemble your device, follow these instructions in reverse order.